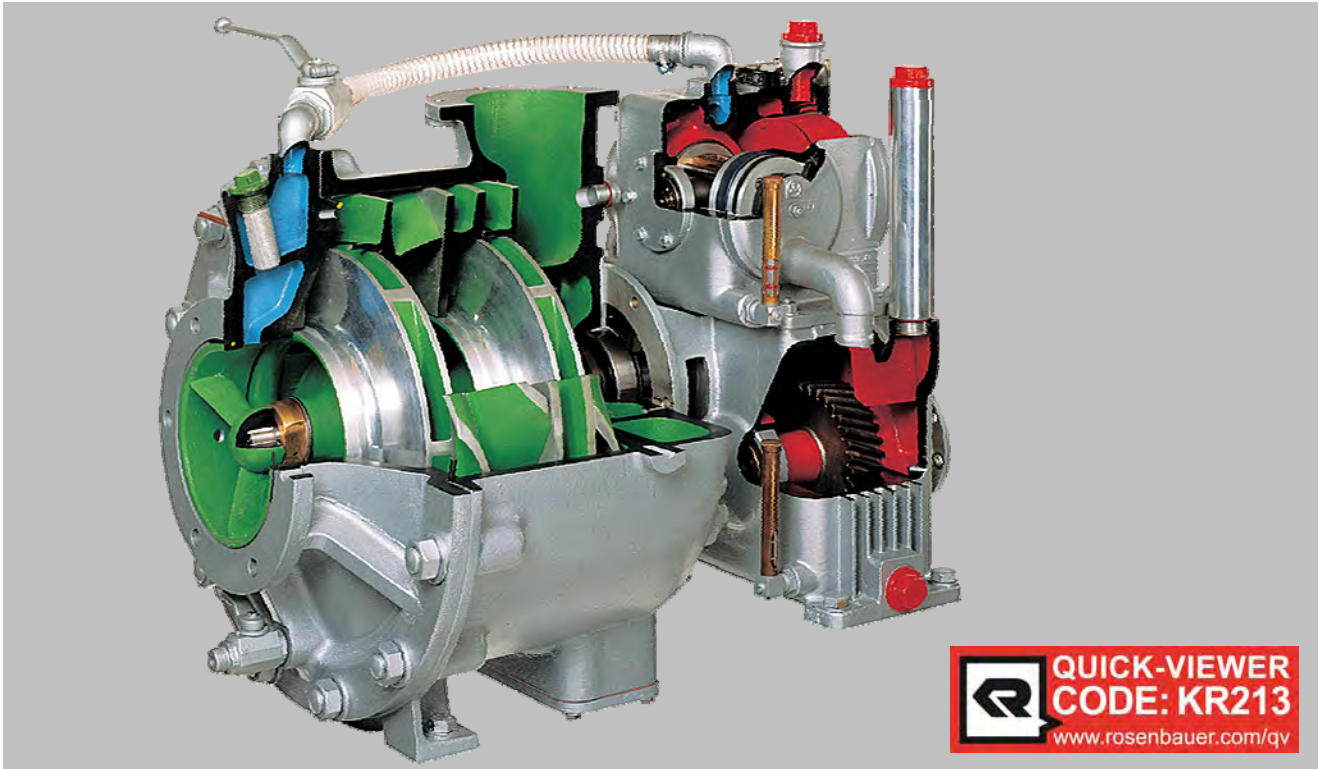


R600

Normal pressure pump



Description

The 2-stage normal pressure pump R600 is the universal pump for airport-, industry- and large-tank fire trucks as well as fire boots and stationary units.

Water hammer when opening and closing outlets can be avoided due to the flat pump characteristics.

The around-the-pump foam proportioning systems FOAMATIC A as well as FOAMATIC E can be integrated into the pump.

Benefits

High performance

- normal pressure output up to 6.500 lpm (1.720 USgpm) at 10 bar (150 psi) and 3 m (10 ft) suction height
- up to 7.000 lpm (1.850 USgpm) at 10 bar (150 psi) in tank suction operation

Marginal water hammer during opening and closing of outlets

- due to flat pump characteristic

High efficiency

High operational safety

- main bearings, pump gear-box and piston priming pump run in oil bath
- maintenance mechanical seals

Performance according EN 1028 and UL

- FPN 10-6000
- UL 150-1500

Contamination insensitive

Different drive possibilities (acc. the requirements)

- direct drive via PTO with a pedestal
- gear box (17 gear ratios) to adapt to different power take-offs (PTOs)
- drive via separate drive engine
- drive via Split Shaft gear box from the main vehicle drive shaft
- drive via hydraulics

Options

- automatic around-the-pump foam proportioning system FOAMATIC A with up to 3 proportioning rates
- automatic around-the-pump foam proportioning system FOAMATIC E with stepless proportioning rates and possibility to show the used amount of foam concentrate
- pump pressure governor
- automatic priming

R600

Normal pressure pump



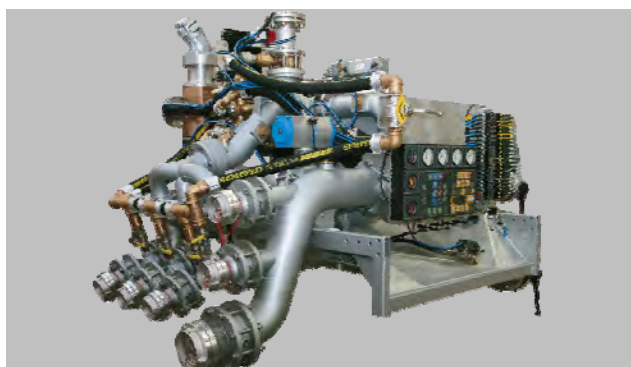
ARFF truck Panther with R600



Industry fire fighting truck with direct injection foam system HYDROMATIC and R600



R600 with around-the-pump foam proportioning system FOAMATIC A



Pump module with direct-foam injection system HYDROMATIC and R600

Technical Data

Design	normal pressure pump
Normal pressure stage	1-stage centrifugal pump
Performance NP	up to 6.500 lpm (1.720 USgpm) at 10 bar (150 psi) with 3 m (10 ft) suction height up to 7.000 lpm (1.850 USgpm) at 10 bar (150 psi) in tank suction operation
Material	corrosion resistant light alloy - anodized (Option: Gunmetal), pump shaft made out of stainless steel
Sealing	maintenance-free mechanical sealing
Priming pump	double acting piston pump - driven via a belt from the pump shaft (disengagable)
Performance priming pump	3 m (10 ft) suction height in 5 sec *

NP: Normal pressure

*) Evacuation volume: 100 liters (26,4 USgpm) ; Atmospheric pressure: 0,975 bar (14,14 psi)

Contact

ROSENBAUER INTERNATIONAL AG
Paschinger Straße 90
4060 Leonding, Austria
Tel.: +43 732 6794-0
Fax: +43 732 6794-91

www.rosenbauer.com

www.facebook.com/rosenbauergroup

Text and illustrations are not binding. The illustrations may show optional extras only available at extra charge. Rosenbauer retains the right to alter specifications and dimensions given herein without prior notice.

KR213
2010-05_RJu